

# AVAILABLE RAIL SERVED SITE

## TUSCALOOSA CO AIRPORT IND PARK



Robert Cardinal Road, Tuscaloosa, Tuscaloosa, AL, 35401

### Sale / Lease

**For Sale:** Yes  
**Sale Price:** \$ 40,000.00 per acre  
\$30,000-\$60,000 per acre is negotiable depending upon the investment, employment and hourly wage of the prospective company.  
**Pricing Information:**

### Zoning

**Zoning:** Light Industry

### Property Details

**Latitude:** 33.225400  
**Longitude:** -87.633300  
**Total Acreage:** 1,000 Acre(s)  
**Available Acres:** 450 Acre(s)  
**Largest Tract Available:** 200 Acre(s)  
**Smallest Tract Available:** 10 Acre(s)  
**Expandable:** No  
**Wetlands:** Yes  
**Phase 1 Audit Done:** Yes

### Description



**For more information, please contact:**

**Tuscaloosa County Industrial Development Authority**  
**Sissie Browning**  
**(205) 349-1414**  
**sissie.browning@tcida.com**

**Economic Development Partnership of Alabama**  
**1320 1st Avenue South**  
**Birmingham, AL 35233**  
**P 205.943.4700**  
**gblalock@edpa.org**  
**<https://www.edpa.org>**

# AVAILABLE RAIL SERVED SITE

## TUSCALOOSA CO AIRPORT IND PARK



Robert Cardinal Road, Tuscaloosa, Tuscaloosa, AL, 35401

### Interstate/Highway

**Interstate:** I-20  
**To Interstate (miles):** 4.5 Mile(s)  
**Interstate #2:** I-59  
**To Interstate #2 (miles):** 4.50 Mile(s)  
**Highway:**  
**To Highway (miles):**

### Rail

**Carrier:** Kansas City Southern

### Electric

**Provider:** Alabama Power Company

### Natural Gas

**Provider:** Spire  
**Pressure (bars):** 125 Psi  
**Size of Main:** 4"

### Water

**Provider:** City of Tuscaloosa  
**Size of Main:** 16"

### Telecommunications

**Provider:** AT&T  
**Fiber Available:** Yes  
**DSL Available:**

### Sewer

**Provider:** City of Tuscaloosa  
**Size of Main:** 12"



**For more information, please contact:**

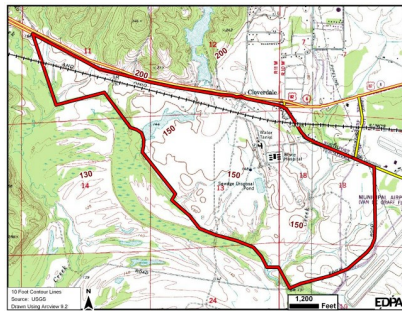
**Tuscaloosa County Industrial Development Authority**  
**Sissie Browning**  
**(205) 349-1414**  
**sissie.browning@tcida.com**

**Economic Development Partnership of Alabama**  
**1320 1st Avenue South**  
**Birmingham, AL 35233**  
**P 205.943.4700**  
**gblalock@edpa.org**  
**<https://www.edpa.org>**

**AVAILABLE RAIL SERVED SITE**  
TUSCALOOSA CO AIRPORT IND PARK



Robert Cardinal Road, Tuscaloosa, Tuscaloosa, AL, 35401



**For more information, please contact:**

**Tuscaloosa County Industrial Development  
Authority**  
**Sissie Browning**  
**(205) 349-1414**  
**sissie.browning@tcida.com**

**Economic Development Partnership of  
Alabama**  
**1320 1st Avenue South**  
**Birmingham, AL 35233**  
**P 205.943.4700**  
**gblalock@edpa.org**  
**<https://www.edpa.org>**