

AVAILABLE INDUSTRIAL SITE

TCIDA CEDAR COVE TECH. PARK



Progress Drive + Ed Stephens Road, Tuscaloosa, Tuscaloosa, AL, 35453

Sale / Lease

For Sale: Yes
Sale Price: \$ 30,000.00 per acre
Price of \$30,000-\$100,000 per acre is negotiable depending upon the investment, employment and hourly wage of the prospective company.
Pricing Information:

Zoning

Zoning: Heavy Industry

Property Details

Latitude: 33.181600
Longitude: -87.323800
Total Acreage: 950 Acre(s)
Available Acres: 400 Acre(s)
Largest Tract Available: 50 Acre(s)
Smallest Tract Available: 5 Acre(s)
Expandable:
Wetlands: Yes
Phase 1 Audit Done: Yes

Description



For more information, please contact:

Tuscaloosa County Industrial Development Authority
Sissie Browning
(205) 349-1414
sissie.browning@tcida.com

Economic Development Partnership of Alabama
1320 1st Avenue South
Birmingham, AL 35233
P 205.943.4700
gblalock@edpa.org
<https://www.edpa.org>

AVAILABLE INDUSTRIAL SITE

TCIDA CEDAR COVE TECH. PARK



Progress Drive + Ed Stephens Road, Tuscaloosa, Tuscaloosa, AL, 35453

Interstate/Highway

Interstate: I-59
To Interstate (miles): 1 Mile(s)
Interstate #2:
To Interstate #2 (miles):
Highway:
To Highway (miles):

Rail

Carrier: Norfolk Southern

Electric

Provider: Alabama Power Company

Natural Gas

Provider: Spire
Pressure (bars): 300 Psi
Size of Main: 6"

Water

Provider: City of Tuscaloosa
Size of Main: 16"

Telecommunications

Provider: AT&T
Fiber Available: Yes
DSL Available:

Sewer

Provider: City of Tuscaloosa
Size of Main: 24"



For more information, please contact:

Tuscaloosa County Industrial Development Authority
Sissie Browning
(205) 349-1414
sissie.browning@tcida.com

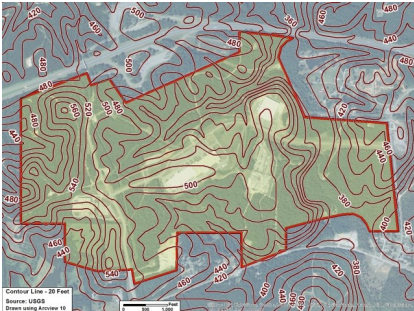
Economic Development Partnership of Alabama
1320 1st Avenue South
Birmingham, AL 35233
P 205.943.4700
gblalock@edpa.org
<https://www.edpa.org>

AVAILABLE INDUSTRIAL SITE

TCIDA CEDAR COVE TECH. PARK



Progress Drive + Ed Stephens Road, Tuscaloosa, Tuscaloosa, AL, 35453



For more information, please contact:

Tuscaloosa County Industrial Development
Authority
Sissie Browning
(205) 349-1414
sissie.browning@tcida.com

Economic Development Partnership of
Alabama
1320 1st Avenue South
Birmingham, AL 35233
P 205.943.4700
gblalock@edpa.org
<https://www.edpa.org>