

AVAILABLE SPEC BUILDINGS BUILDING

TCIDA PROMOTIONAL BUILDING



1601 Boone Boulevard, Northport, Tuscaloosa, AL, 35401

Sale / Lease

For Sale: Yes
Sale Price: \$ 3,400,000.00 Total
For Lease: No
Lease Price:

Pricing Information: Price is negotiable upon the investment, employment and hourly wage of tenant. Size of entire available site: approx. 17.29 acres a \$40,000 per acres.

Building Details

of Floors: 1
Multi-Tenant: Yes
Prior Use: New promotional property
Sprinklered: No
Heated: No
Air Conditioning: No
Drive In Doors: 1
Eave Height Minimum: 26
Floor Thickness: 6"
of Cranes: 0

Property Details

Latitude: 33.219616
Longitude: -87.640101
Total Square Footage: 108,000 sq. ft.
Available Square Footage: 108,000 sq. ft.
Available Office (sqft):
Building Expandable: Yes
Expandable to (sqft): 216,000 sq. ft.
Max. Contiguous Space: 108,000 sq. ft.
Total Acreage: 17.2 Acre(s)
Additional Acreage Available:

Zoning

Zoning: Light Industry

Description

Park zoned for all manufacturing processes. Sell or develop and lease back to client producing new mfg jobs. TCIDA can manage build-out, incentives and financing process.



For more information, please contact:

Tuscaloosa County Industrial Development Authority
Sissie Browning
(205) 349-1414
sissie.browning@tcida.com

Economic Development Partnership of Alabama
1320 1st Avenue South
Birmingham, AL 35233
P 205.943.4700
gblalock@edpa.org
<https://www.edpa.org>

AVAILABLE SPEC BUILDINGS BUILDING

TCIDA PROMOTIONAL BUILDING



1601 Boone Boulevard, Northport, Tuscaloosa, AL, 35401

Interstate/Highway

Interstate: I-59
To Interstate (miles): 4.5 Mile(s)
Interstate #2: I-20
To Interstate #2 (miles): 4.50 Mile(s)
Highway:
To Highway (miles):

Electric

Provider: Alabama Power Company

Natural Gas

Provider: Spire

Water

Provider: City of Tuscaloosa

Telecommunications

Provider:
Fiber Available:

Sewer

Provider: City of Tuscaloosa



For more information, please contact:

Tuscaloosa County Industrial Development Authority
Sissie Browning
(205) 349-1414
sissie.browning@tcida.com

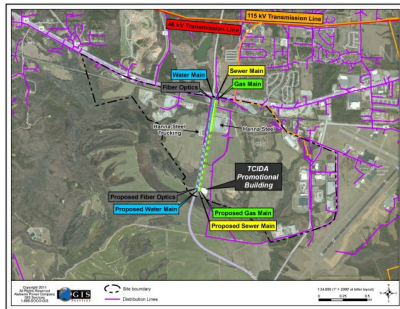
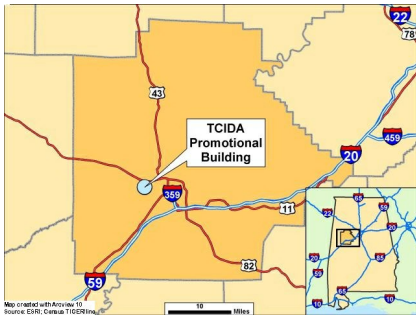
Economic Development Partnership of Alabama
1320 1st Avenue South
Birmingham, AL 35233
P 205.943.4700
gblalock@edpa.org
<https://www.edpa.org>

AVAILABLE SPEC BUILDINGS BUILDING

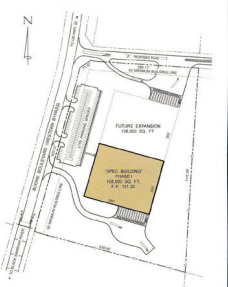
TCIDA PROMOTIONAL BUILDING



1601 Boone Boulevard, Northport, Tuscaloosa, AL, 35401



SITE PLAN/FLOOR PLAN



For more information, please contact:

Tuscaloosa County Industrial Development
Authority
Sissie Browning
(205) 349-1414
sissie.browning@tcida.com

Economic Development Partnership of
Alabama
1320 1st Avenue South
Birmingham, AL 35233
P 205.943.4700
gblalock@edpa.org
<https://www.edpa.org>